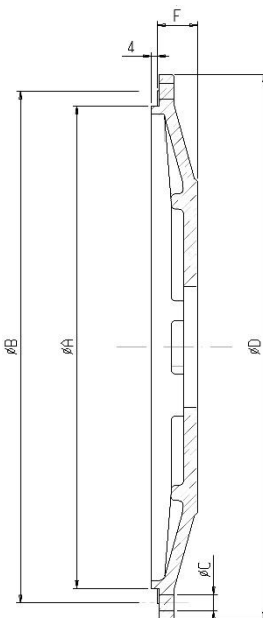




Ghisellini Srl

**CAMPANA BOMBATA GHISA**



Foratura per:

SAE-A, SAE-B, SAE-C, GR2,  
GR3

A richiesta versioni speciali

**CAMPANA BOMBATA COPRIVOLANO SAE J617**

	A Mm	B Mm	C Mm	C Nr. Fori	D Mm	F Mm	F (alta) mm
<b>SAE 2</b>	447.68	466.72	Ø10.5	12	489	50	--
<b>SAE3</b>	409.58	428.62	Ø10.5	12	450.8	33	50
<b>SAE 4</b>	361.95	381	Ø10.5	12	403.4	30	50
<b>SAE5</b>	314.32	333.38	Ø10.5	8	355.6	25	--

Ghisellini srl

Via del Lavoro, 9 44041 -Casumaro (Fe)

Reg. Imp. / Cod. Fiscale / P. IVA: 02066970381

E.Mail: [info@officinaghisellini.it](mailto:info@officinaghisellini.it)

Tel 051/6849978 - Fax 051/6846852

